

CAX SERIES OUTDOOR LIGHTING

CAX-40-75W-MCTP-SR
ANGLED-BEAM GARAGE CANOPY

MCTP Multi Color Temperature & Multi Power/Wattage (Selectable)

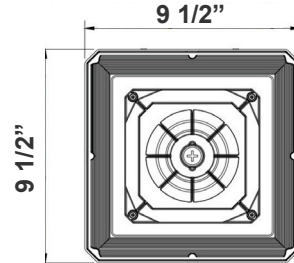
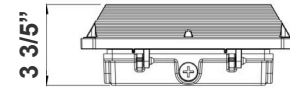
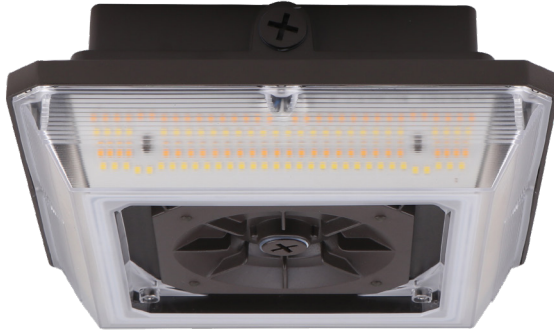
WESTGATE
THE FUTURE IS HERE...AND IT'S QUITE BRIGHT!

Customer Name: _____

Project Name: _____

Note: _____

Type: _____



9 1/2" (L) x 9 1/2" (W) x 3 3/5" (H)

Ideal for Indoor Parking Lot, Commercial Buildings, Schools, Warehouse, Retail Centers, Apartment, Complexes.

Features

- Housing: Die-cast Aluminum With Prismatic Polycarbonate Lens Redesigned For LED
- Sensor-Ready: 3-Pin Socket Pre-Installed. See Motion Sensor Accessories
- Factory-Installed Options: Battery Backup
- Multi Color Temperature & Multi Power (Selectable Switch Located On The Housing)

Technical Specifications

Electrical:

- Input Wattage: 40W/60W/75W
- Input Current: 0.6A MAX
- Input Voltage: 120-277VAC 50/60Hz
- Power Factor: >0.90
- LPW: 140

Mechanical:

- Die-cast Aluminum
- Four 1/2" Threaded Hubs Located On Four Sides Of The Housing
- Sensor-Ready: 3-Pin Socket Pre-Installed. See Motion Sensor Accessories
- Prismatic Polycarbonate Lens
- Operating Temperature: -40°F ~ 131°F
- IP rating: IP65, Wet Locations
- 7-year warranty

Lighting:

- Multi Color Temperature & Multi Power (Selectable Switch Located On The Housing)
- Dimming: 0~10V Dimmable
- Total lumens: 10500LM
- Color Temperature: 3000K/4000K/ 5000K
- Color Rendering index: >80
- Beam Angle: 150°
- Lifespan: 70000 Hrs

Applications:

- Indoor Parking
- Commercial Buildings
- School
- Warehouses
- Complexes
- Apartment
- Garage

Other Models:

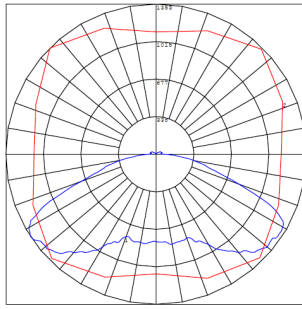
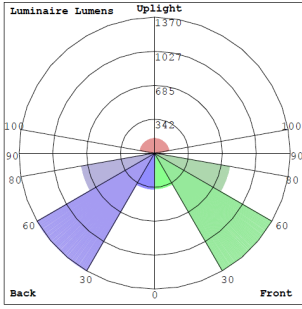
- 45W | 6300LM | CAX-20-45W-MCTP-SR • 60W | 8400LM | CAX-30-60W-MCTP-SR • 90W | 12600LM | CAX-60-90W-MCTP-SR



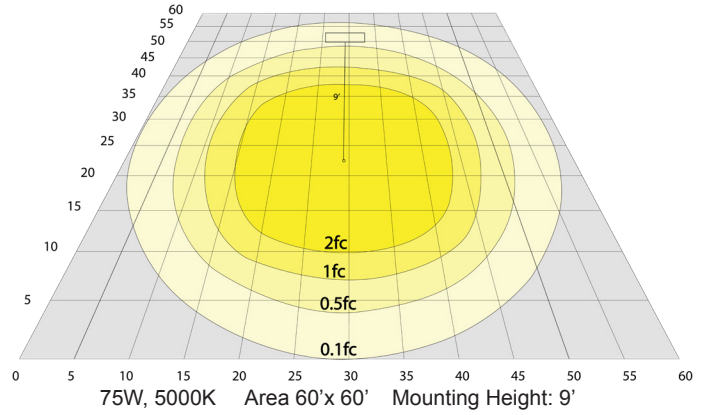
Phone: (877) 805-2252 | Fax: (877) 805-2252
www.westgatemfg.com



Photometrics: CAX-40-75W-MCTP-SR



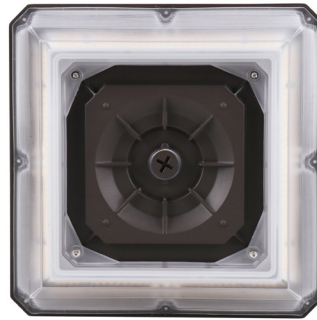
BUD Rating: B2-U3-G2



Other Views:



Side View



Front View



Back View

Performance Table: CAX-40-75W-MCTP-SR

MODEL NO.	Wattage	Voltage	Lumens	Color Temp.	BUG Rating	LPW
CAX-40-75W-MCTP-SR	40W 60W 75W	120~277V	5600LM 8400LM 10500LM	3000K 4000K 5000K	B2-U3-G2	140

Sample Ordering

Model **Wattage** **Color Temp.** **Sensor**
 - - - -
 30K = 3000K
 50K = 5000K
 40K = 4000K

Accessories Options:

Blank = No Accessory
 WEC-3MR-72-TLB-BK-3PIN = 600W Max, 3-PIN 12-24VDC PIR SENSOR, BLACK, WITH BASE (OPTIONAL REMOTE CONTROL WEC-3RC)
 WEC-3MBT-72-TLB-BK-3PIN = 600W Max, 3-PIN 12-24VDC PIR SENSOR, BLACK, WITH BASE (OPTIONAL REMOTE CONTROL WEC-3RC)
 WEC-3PR-72-TLB-WH-3PIN = 600W Max, 3-PIN 12-24VDC PIR SENSOR, WHITE, WITH BASE (OPTIONAL REMOTE CONTROL WEC-3RC)
 WEC-3RC = REMOTE CONTROL
 WEC-3PIN-ZHAGA-CONV = 3-PIN TO ZHAGA SOCKET CONVERTER 1/2in NPT (Required for Sensor Installation)

Factory-Installed Options:

Blank = No Accessory
 OPT-EM-OD2INT = INTERNAL EMERGENCY BACKUP BATTERY

ACCESSORIES OPTIONS:



WEC-3PR-72-TLB-WH-3PIN



WEC-3MR-72-TLB-BK-3PIN
WEC-3MBT-72-TLB-BK-3PIN



WEC-3RC
REMOTE CONTROL WEC-3RC

FACTORY-INSTALLED OPTIONS:



OPT-EM-OD2INT

